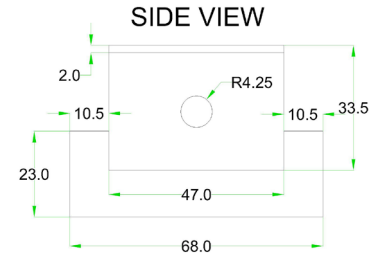
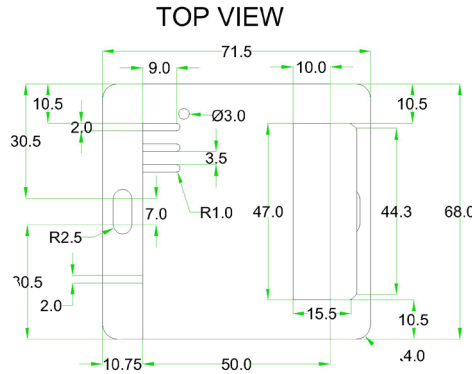




## Optical Dust Sensor (ENV-DUST)

Sensor Page Store Page



### General Description

Designed to monitor dust particles in data centers, server rooms & cabinets.

### Key Features

- plugs into the base unit (BASE-WIRED).
- powered by the base unit (BASE-WIRED).
- OU Rack or wall mountable sensor.
- alerts via SNMP Traps, email, SMS or voice calls.
- compact & affordable optical dust sensor made in Japan.
- reports dust density in  $\text{mg}/\text{m}^3$
- range: 0 to  $600 \mu\text{g}/\text{m}^3$
- measures total dust density (PM2.5 & PM10 combined)
- sensitivity:  $100 \mu\text{g}/\text{m}^3$

### Technical Specifications

Power Source:	SensorGateway (BASE-WIRED)
Power Usage:	156 mW
Range:	0 – $600 \mu\text{g}/\text{m}^3$
Particle size:	PM2.5 and PM10
Sensitivity:	$100 \mu\text{g}/\text{m}^3$
Measurement mechanism:	Optical

### Environmental and Physical Specification

Operating temperature range	$0^\circ\text{C}$ to $+75^\circ\text{C}$ ( $32^\circ\text{F}$ to $+167^\circ\text{F}$ ) in PoE mode
Humidity (operating and storage)	< 90% rH (non-condensating).
Dimensions	71.5 mm (2.8") x 68 mm (2.68") x 23 mm (0.9")
Weight	0.14kg (0.31 lbs.)